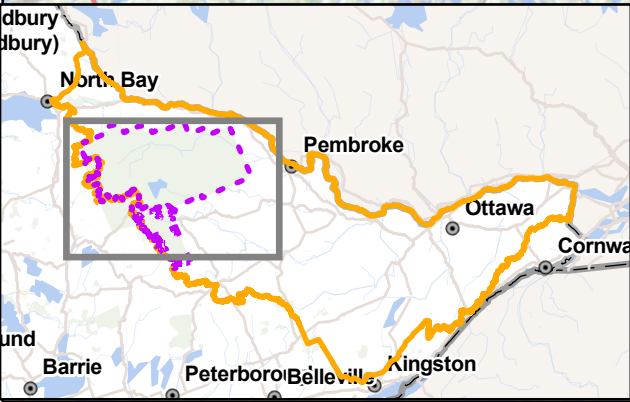


CAUTION ALGONQUIN HARVESTERS:

Please be aware that many of the campgrounds in Algonquin Park remain open until late October. Campers and park visitors will be concentrated near campgrounds and within the campground development zones indicated on the map. Please refrain from actively harvesting within or immediately adjacent to these areas. Please keep in mind that backcountry campers may also be present on the landscape during the Algonquin harvest season. Interior campsites have also been included on this map.



Map E - Algonquin Provincial Park Development and Campground Zones

- | | |
|--|-----------------------------|
| Algonquins of Ontario Settlement Area Boundary | Algonquin Park Harvest Area |
| Development Zone | Campground Area |
| Shirley Lake Rd - Kiosk Rd | Campsite Centre |
| Wildlife Management Unit (WMU) | |

Algonquins of Ontario

0

5

10

20

Kilometers

1:380,000

Projection: NAD 1983 UTM Zone 17N

Data: AOO, LIO

"This map is a graphic representation and for informational purposes only. The map data has been compiled from various sources and the accuracy is not guaranteed. Do not rely on this map as a precise indicator of routes, locations of features or as a guide for navigation. This map may contain cartographic errors or omissions." [October, 2022]